



Omnesys Technologies



Option Trading with Nest Trader

Table of Contents

How to apply Greeks in market watch ?.....	4
How to use option calculator?.....	5
How to use Position Analysis ?.....	6
How to invoke various options under Positon Analysis ?.....	7
Implied Volatility :	8
Implied Volatility Graph:	8
Scenario Analysis :	8
View Pay off :	8
View Sensitivity :	8

How to apply Greeks in market watch ?

Click on reposition column and add the greek column to the market watch.

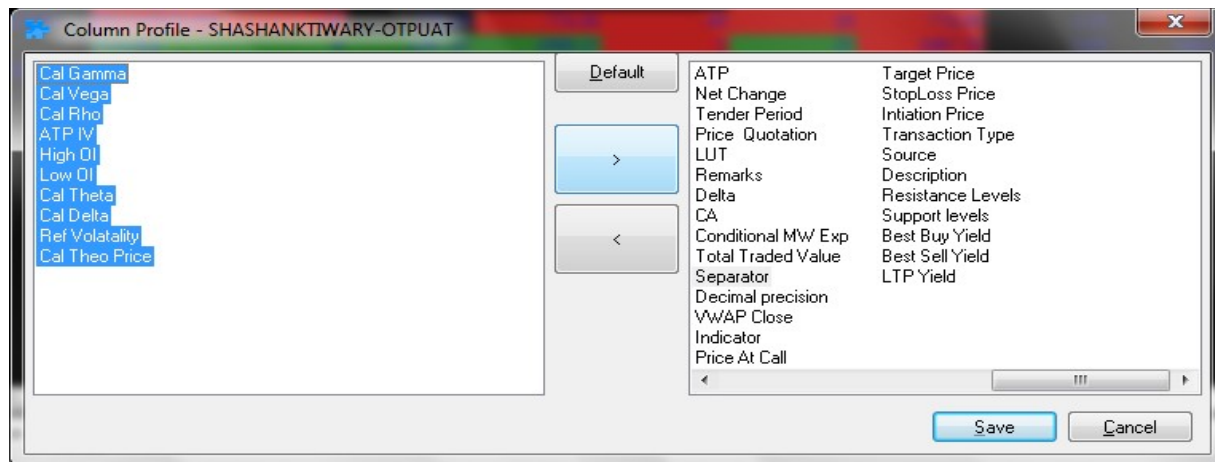


Fig: Greeks in reposition column (All the greeks where shown in blue)

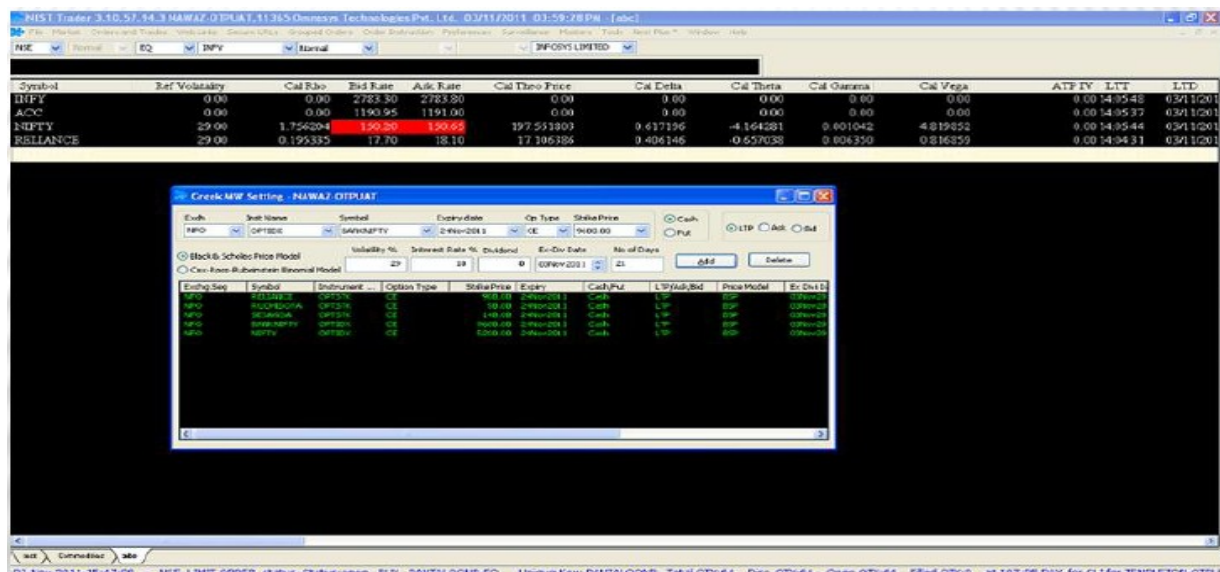


Fig: Greeks in market watch

How to use option calculator?

Click on **Option Calculator** under **Tools** menu or press **Shift+O**.

You can get the option greeks value for a particular option contract after mentioning the required information. (User has to give all related information viz. Exchange, Inst name, Symbol, Expiry date, Option type, strike price and type of model).

Press **Calculate** to calculate the option greeks.

Option Calculator - PAVAN-OTPUAT

Exch: NFO | Inst Name: OPTIDX | Symbol: NIFTY | Expiry date: 24Nov2011 | Op Type: CE | Strike Price: 5100.00

Input Values:

Underlying Futures Lower

5285.70 | 5315.05

Spot Price(in Rupees): 5315.05

Actual Market Value: 256.99

Volatility %: 14.8

Interest Rate %: 11

Dividend(in Rupees): 0

Ex-Dividend Date: 02Nov2011

No of Days: 22

Black & Scholes Price Model
 Cox-Ross-Rubinstein Binomial Model

Output Values:

Parameters	Call	Put	Straddle
Theoretical Option Price	256.991	8.239	265.231
Delta	0.909	-0.091	0.819
Gamma	0.001	0.001	0.002
Theta	-2.095	-0.568	-2.664
Vega	2.129	2.129	4.257
Rho	2.759	-0.295	2.464

Implied Volatility
Bid : 12.6650 % Ask : 13.7240 % LTRate: 13.3910 %

Volatility Option Price

Fig: Option Calculator

How to use Position Analysis ?

Click on **Position Analysis** under **Tools** menu or press **Shift+Alt+P**.

It Shows :

Pay-Off for a given portfolio

Option Greeks for a given portfolio.

This is especially helpful when the user has a portfolio consisting of several options positions.

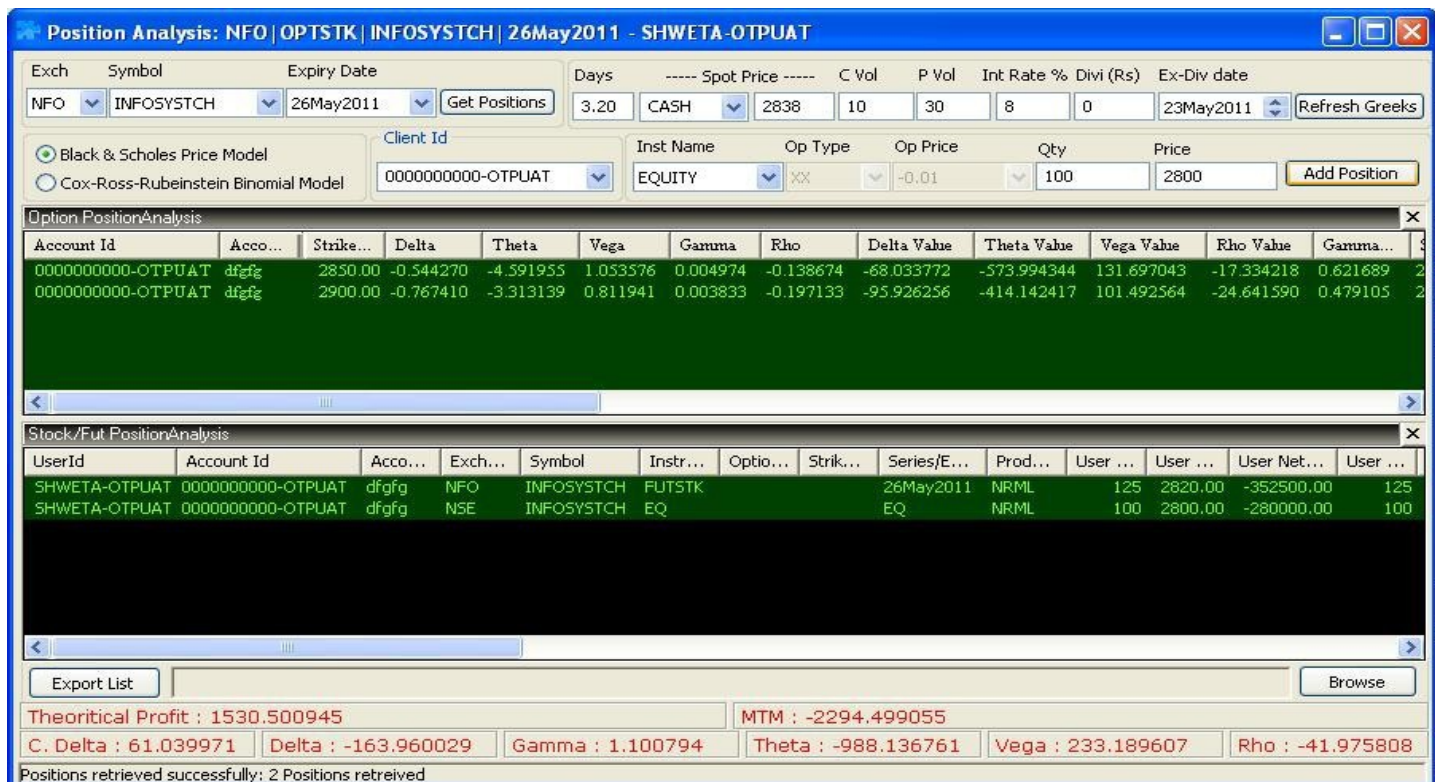


Fig: Position Analysis Window

How to invoke various options under Positon Analysis ?

Right click on position analysis window.

Implied Volatility	F5
Implied Volatility Graph	Shift+F5
Buy Order	F1
Sell Order	F2
Order Book	F3
Trade Book	F8
Snap Quote	F6
Refresh Position	Space
Delete Position	Delete
Scenario Analysis	Ctrl+S
Reflect Volatility For Selection	Ctrl+Space
Grid Lines	Shift+G
Write To Excel	Shift+E
Customize	Ctrl+Shift+C

Fig :Drop Down list of various options under right click

Implied Volatility :

Once this option has been selected a small window will appear in which Implied Volatility can be seen for the **Future** and **Cash** for a selected scrip in Position Analysis window Implied Volatility window can also be invoked using shortcut key **F5**.

Implied Volatility Graph:

This option provides a real time graph for the selected contract. By default it will show the graph for call as well as put option that keeps on changing on real time basis.

Scenario Analysis :

Using Scenario Analysis option, a user will be able to analyze his/her option positions under different scenarios. User just needs to enter the price band (high and low) along with the intervals, and the Scenario Analysis will automatically calculate the Max Profit, Max Loss, Bep1, and Bep2, for that price band.

View Pay off :

This option allows user check various payoffs at different price range for a selected contract. If user has only one position in the Position Analysis Window, it will show only stock price with possible profit/loss for that position in a given interval whereas if there is more than one option positions present in the Position Analysis Window, it will show the combined pay-offs along with the individual pay-offs for each option contract present in the Position Analysis Window.

View Sensitivity :

This option allows user to check the sensitivity of the selected option contract. User needs to enter the asset price range between which it can be moved. There are three options available to check the sensitivity of an asset. These are :

- a. Date Range
- b. Risk free interest Rate
- c. Volatility

You will get the pay-off for each option and can draw the Pay-off Graph

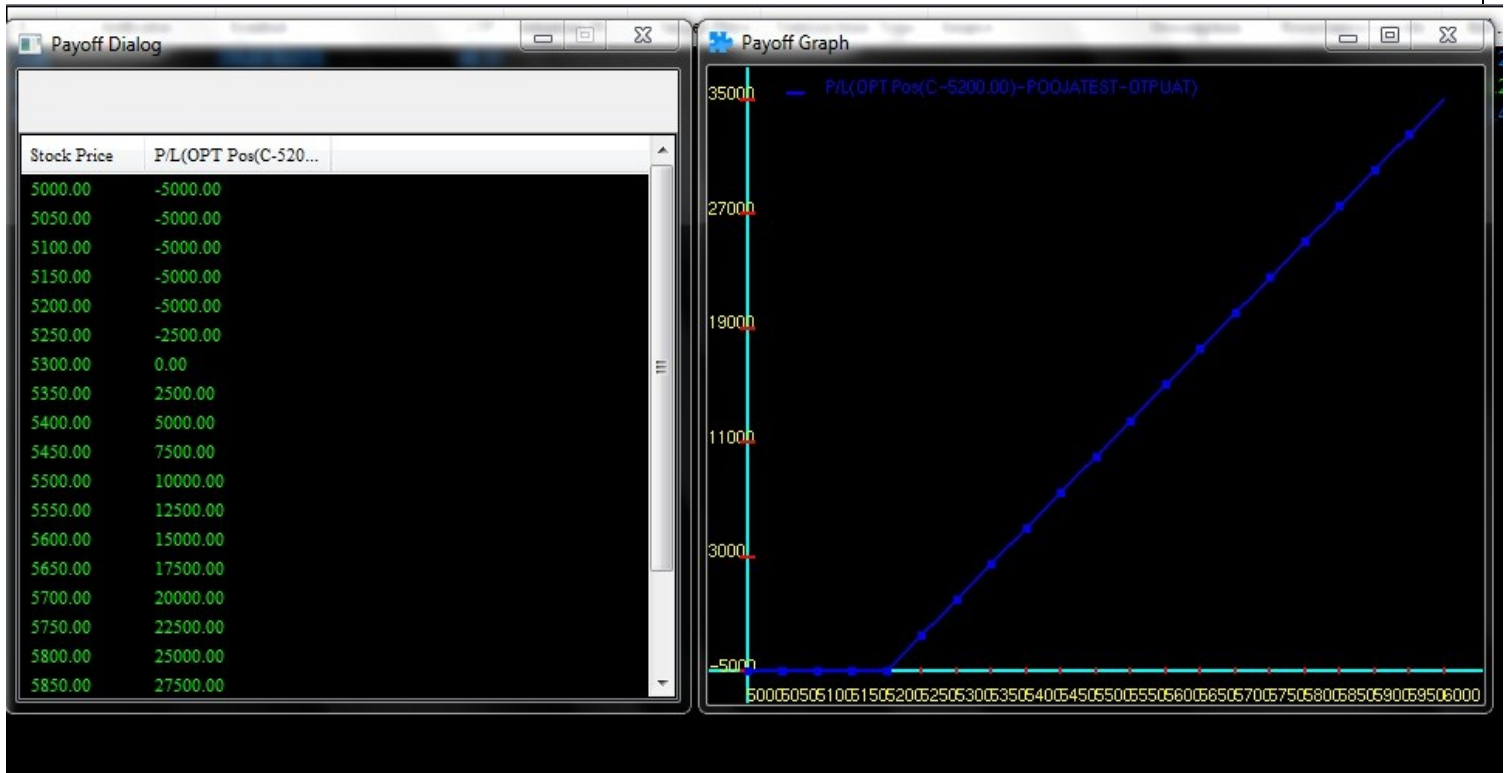


Fig: Payoff Dialogue and Payoff Graph